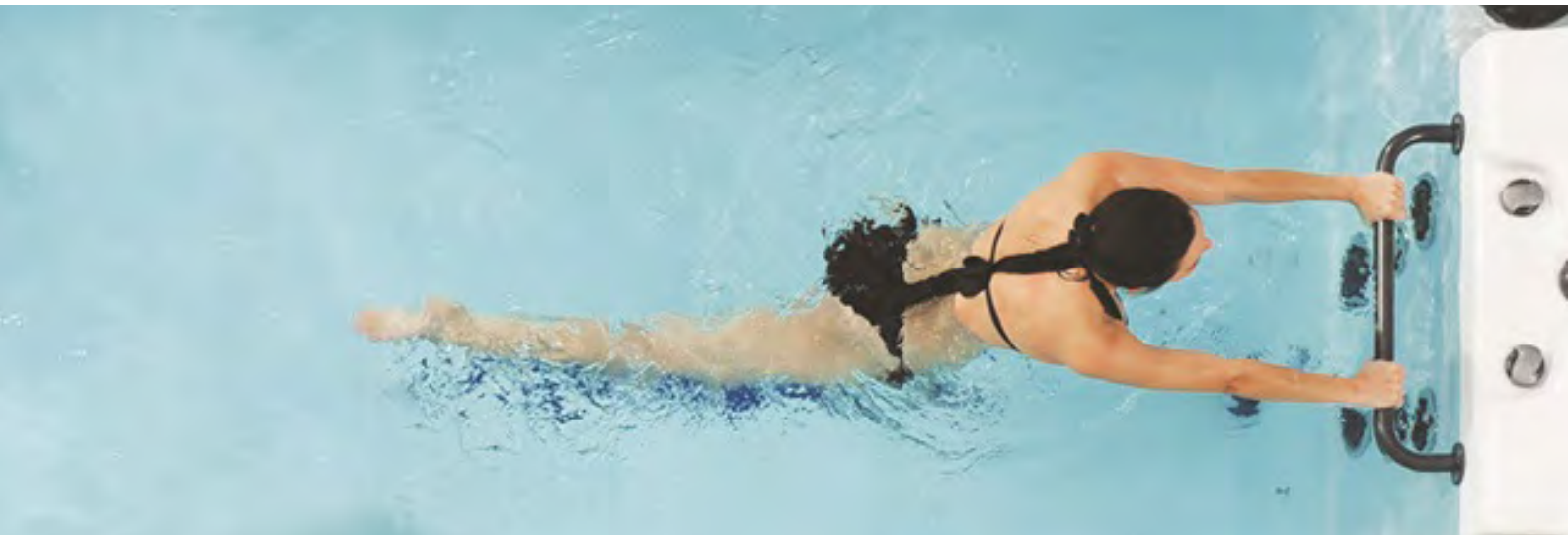


VITA STR

Swim Train Renew



www.vitaspaspa.co.uk



Vita STR History

Way back in the 1970s Vita Spa STR Series Swim Spa were launched in the USA at the very start of the hot tub industry. They were produced in Arizona by the MAAX Spas Industries Corporation by a team of people that are proud of their work. Many employees at MAAX Spas have been there for over 25 years so they know a thing or two about hot tubs.

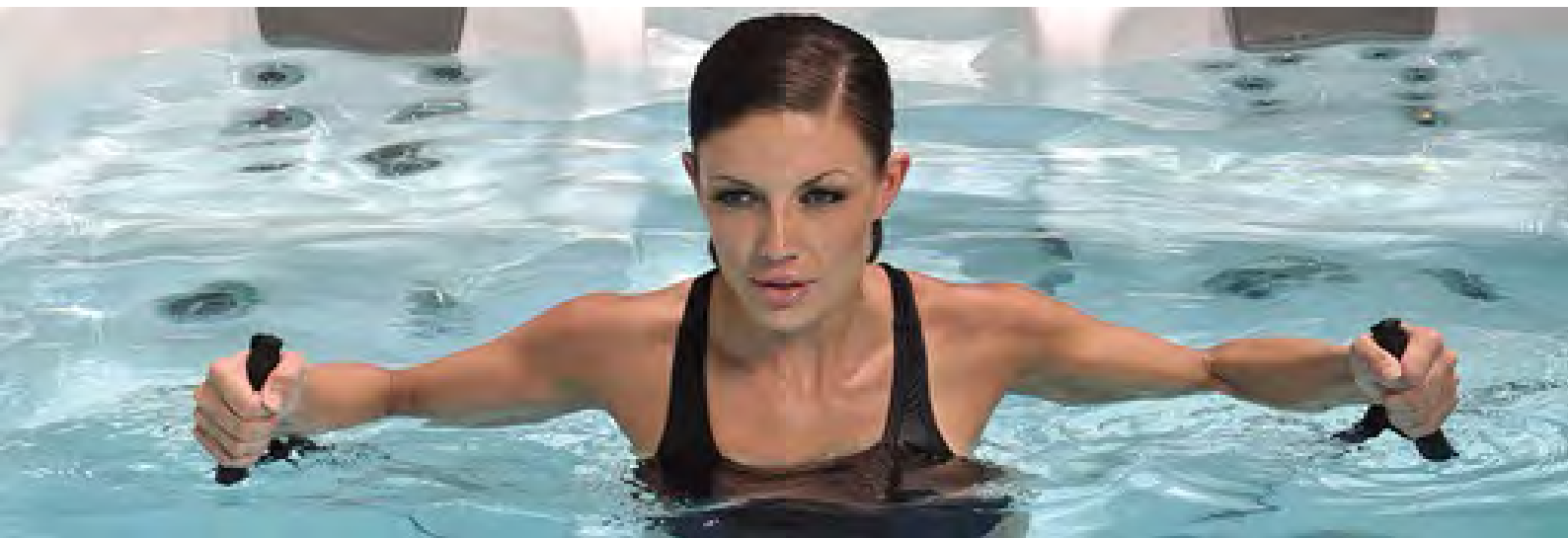
Building a great spa takes a lot of experience and knowledge. To be able to offer a lifetime warranty on a hot tub, the insulation is no easy task and took many years to perfect these extremely important features but we did it.

You can be assured that buying a Vita STR Series Swim Spa is a sound investment into your family's future. It's years of enjoyment. We don't cut corners like other brands to offer cheap spas that are built on quality and reliability. You can truly relax when buying a swim spa from us.



Creating a luxury swim spa takes a lot of experience and knowledge. You can be assured that buying a Vita STR is a sound investment into your family's future and it will bring many happy years of enjoyment.

At Vita STR we stand by our quality and reliability, to ensure you continue to enjoy your swim spa for years to come.



of the hot tub industry as we know it. Now
ud of their work and live by their reputation.
bout building spas.

anty on our steel frames and patented
uilt into our swim spa range.

ily's future and it will bring many happy
a budget. At Vita Spa we stand by our



Vita STR Advantages

Jet Propulsion System

The anti-turbulence technology of the xStream™ Force Jet Propulsion System creates a powerful, smooth, variable jet stream that is completely adjustable and designed to allow you to swim at your fitness level.



Smooth Jet Stream

The Vita STR Swim Spas Anti-turbulence technology provides a smoother, more even flow of water that can easily be adjusted to match your skill level. The unidirectional flow design eliminates harsh currents that can make it harder to stay in one place while you swim.



Wide Swimming Lane

The 30" swim lane in Vita STR swim spas gives you plenty of room for all forms of swimming, and even leaves enough space for people to sit on the observation bench without getting in the way of the swimmer. While you swim.



Training with xStream™ Force jets

Swimming has long been known as the ultimate zero-impact exercise and is widely prescribed by physicians for their patients who want to get in shape or tone their body. Your swim spa uses an impressive water propulsion system that works together with its open floor plan design. The observation seats and well-marked swim lanes provide the optimum swim training centre for your entire family.





Vita STR: Swim Train Renew

Swim

Swimming has long been known as the ultimate zero-impact exercise and is widely prescribed by physicians to patients who want to get in shape or tone their body. Vita STR swim spas employ two different water propulsion systems that work in concert with its open floor plan design.

Choose a multi jet deep stream for exercise or the MAAX Force™ swim system for the ultimate endless current swimming experience. The observation seats and well marked swim lanes provide the optimum swim training center for your entire family.



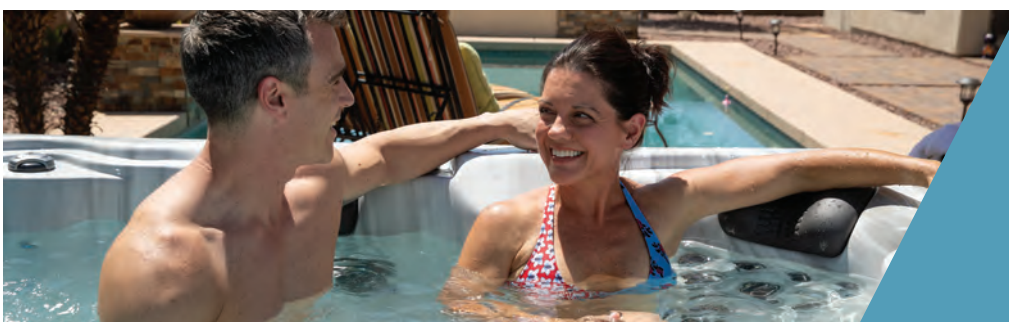
Train

A wide variety of aerobic exercises are possible in a Vita STR Swim Spa. Aqua jogging is especially effective as the deep water neutralizes the effects of gravity while increasing resistance for an amazing low impact workout. Fitness experts recommend a warm water fitness regimen to maximize weight loss. Your Vita STR can also be equipped with the aquatic exercise equipment package that features modern resistance band technology. Attach the resistance bands to perform a complete toning program.



Renew

When you are finished working out, sit back, and relax for a complete spa experience. Let the hydrotherapy jets massage those tight, sore muscles. A recent study shows even a 10 minute massage improves muscle recovery after working out. Combined with elements of luxurious space and sound capabilities, your swim spa helps you completely recuperate so you can face tomorrow at full capacity.





Vita Spa STR Series Features

Made in the USA

The hot tubs we see today were first created in the United States of America back in the 60s and that experience through the decades has enabled the US manufacturers to build the world's very best spas. Quality and innovation through past experiences.



Steel sub-structure

The steel structure design in Vita STR® series swim spas allows for complete service of the entire structure and all mechanical parts. The swim spa can be serviced and brought back to factory specifications right in your backyard. We call this feature "Appliance Grade."

The Vita STR® swim spas have a steel frame which provides greater structural integrity than wood, as well as superior corrosion protection for a much longer life. It will not expand or contract with moisture. The inorganic properties will never rot, warp, split or crack and eliminate worries of animal infestation or termite damage.



Lifetime steel structure warranty

Our steel structure carries a lifetime warranty. This means for the lifetime of your ownership you can feel secure knowing any component of the structural frame will be replaced or fixed to factory specifications.

- 40% lighter, yet 250% stronger than traditional wood frames
- Weatherproof
- Corrosion-free



Northern Exposure Insulation

Is a unique thermal barrier technology that recycles the free heat energy for more efficient heating. All four sides of the spa, plus the floor and cover, are lined with copper material to reflect radiant heat energy generated from the pumps back into the swim spa.

Service made easy

Your Vita STR® appliance grade swim spa can be serviced and put completely back together to factory specifications. This is not possible with conventional foam-filled swim spas as they are extremely hard to service and are typically damaged in the process.





Vita Spa STR Series Features

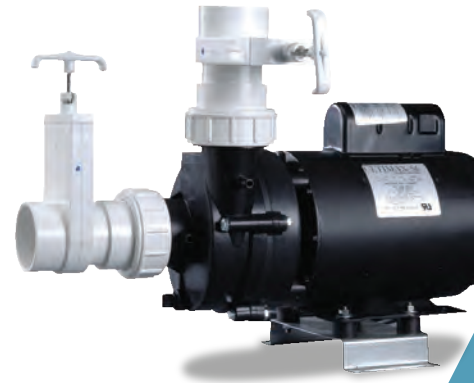
Lifetime Insulation Warranty

The insulation system in your new Vita STR swim spa is warranted to maintain the same insulation value as it had at the time it was manufactured. As you enjoy your swim spa over the years, you'll feel secure knowing it can be maintained at the same high level of efficiency as the day it was made.



Fully electronic 56 frame pump

Vita STR® swim spa utilize Direct Drive 56 frame pumps in all models. These are larger and more powerful than the 48 frame motors found in most swim spas. This eliminates mechanical switches, allowing the pumps to run longer and more energy efficient.



Powerpack with M8 technology

Powerpack with M8 Technology is a revolutionary new hardware software platform that completely eliminates mechanical sensor switches. The M8 platform features "Smart Sensors" to accurately and reliably measure water temperature.

Know your swim spa's health at a glance

The status indicator light is a standard feature on all swim spas, allowing you to check the status of your swim spa without opening the cover or app. The colour changes from blue to red or flashes blue or red with corresponding error codes.



The Vita STR swim spa filtration system

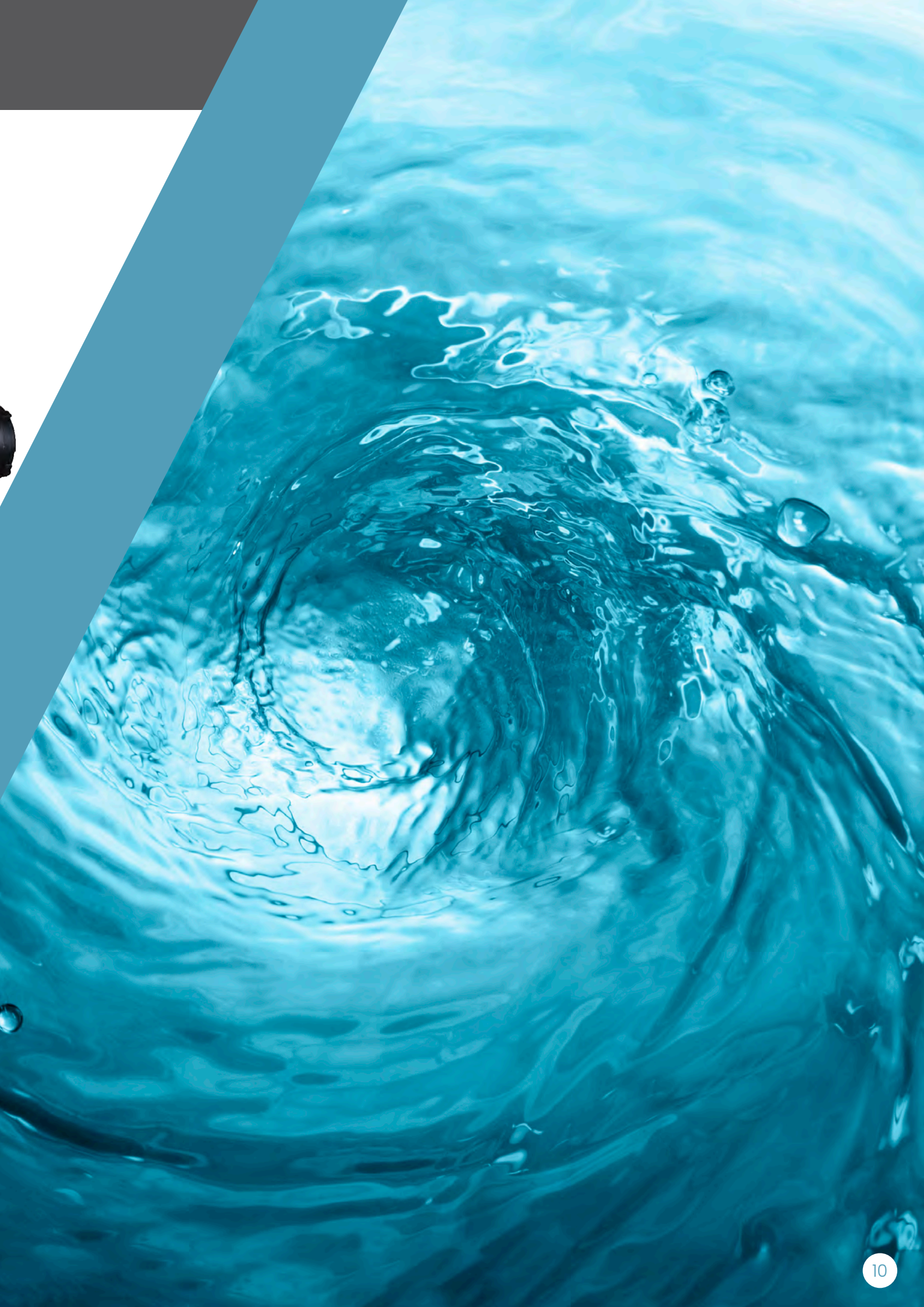
Our dual filtration system ensures that the maximum amount of water passes through the filters before it re-enters the spa. Filtration is driven by the powerful jet pumps, which rapidly circulate large amounts of water.



ABS sealed base

The ABS Sealed Base is made of one-piece construction and provides a rugged foundation that seals the bottom of the spa, locking in heat and sealing out moisture.





Vita Spa STR Series Features & Co

Weather shield cover

WeatherShield covers are lined with our copper insulation sheet to improve heat retention. Double stitched seams for durability allow the cover to hold over 400 pounds. The outer shell is extremely weather resistant to fading while weighing about 25% less than other covers in the industry.



CleanZone® Ultra

The use of the CleanZone® Ultra UVC light is the same technology utilized in many communities around the world to purify drinking water. This technology is combined with an Ozone System that is used to oxidize and clean your spa water.

This ultimate water purification system will automatically maintain healthy, crystal-clear water while reducing chemical maintenance. CleanZone® Ultra kills 99.9% of microorganisms, bacteria, viruses, and parasites, making this the perfect sanitization system for your spa.



Excel-X™ Cabinets

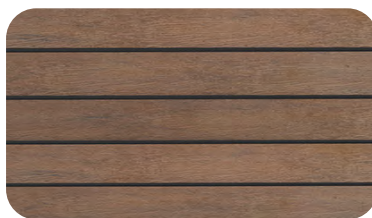
Made from a high impact composite, Excel-X looks and feels like real natural wood. Excel-X is ecologically friendly, doesn't weather or stain, and is virtually maintenance free.

STR Swim Spa Cabinet Choices

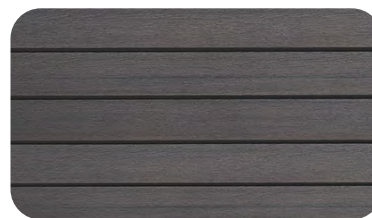
Modern Mocha



Pecan Ridge



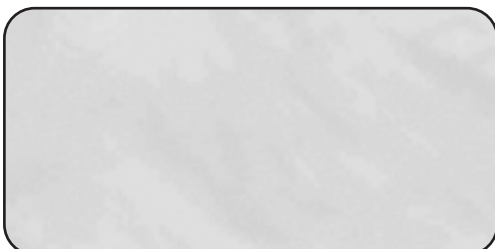
Resort Grey



Acrylic Colour

Vita STR swim spas are finished in an attractive interior made from continuous cast acrylic. This is superior to ethylene "soft plastic" surfaces. The hard, non-porous surface resists stains, fading, scratches and chemical abuse. With the look of granite, pearl or metalescence, the extremely rugged and durable finish offers beauty and peace of mind.

Silver Marble



lours



Swim Spas



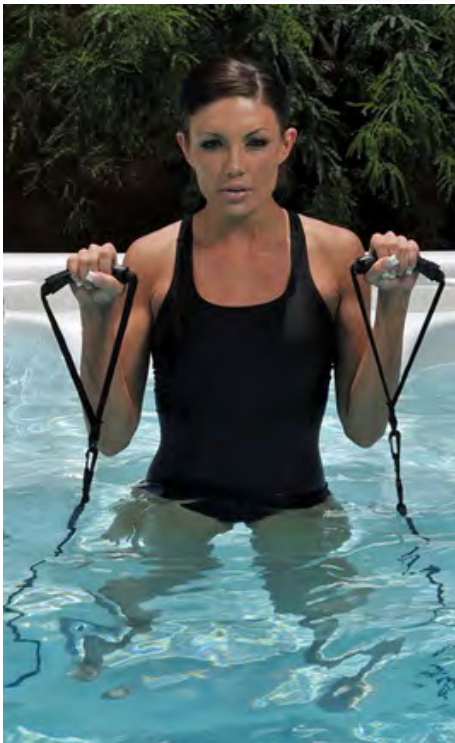
VM8

18ft

The VM8 has everything you need to enjoy an incredible exercise experience and also relax and soothe your tired muscles all in one place.

The VM8, is a 18ft spacious Swim Zone with 8 seats. Powered by 4 x 3HP Massage Pumps. VM8 also has 31 Hydrotherapy Jets and 2 River Jets. Its massive swim zone is perfect even for the taller swimmer plus a 5 seater spa.

- Large Dual Cartridge Filtration
- Northern Exposure Insulation System
- Biozone Water Management
- Latest Technology M7 Heating
- Integrated Bluetooth Music System with Subwoofer
- LED Cup Holders & 20 bright underwater LED lights
- Easy to read Deluxe touchscreen topside controls.



Technical Information

Size: 553cm x 228cm x 135cm

Jets: 31 Hydrotherapy Jets, 2 River Jets

Seats: 8 Seats

Pumps: 4 x 3HP Massage Pump

Power: 40amps (Swim Spa)

16amps (Hot Tub)

Weight: 1,361kgs

Litres: 6,245L (Swim Spa)

1,136L (Hot Tub)



VM Series Features

Vita Tunes with Subwoofer
Hydrotherapy Jets
High Flow River Jets

Six Backlit Fountains
Multi-Cartridge Filtration
Multiple Illumination Zones
Touch Screen Control

Global App Control
Swim Tether Mount
Status System



Optional Extras

Ozone Purification
CleanZone Ultra (Ozone and UVC)

Swim Tether
Rowing Kit

Swim Spas



VM6

16ft

The VM6 was built to provide you with the ultimate swimming experience with its three xStreamForce Swim Jets. Finish your workout feeling stronger and cool down in one of three seats as you enjoy a relaxing massage to calm and soothe your muscles.

The VM6, is a 16ft spacious Swim Zone with loungers and 3 seats. Powered by 3 x 3HP Massage Pumps, the VM6 also has 27 Hydrotherapy Jets and 3 River Jets. Its massive swim zone is perfect even for the taller swimmer

- Large Dual Cartridge Filtration
- Northern Exposure Insulation System
- Biozone Water Management
- Latest Technology M7 Heating
- Integrated Bluetooth Music System with Subwoofer
- LED Cup Holders & 20 bright underwater LED lights
- Easy to read Deluxe touchscreen topside controls.



Technical Information

Size: 483cm x 228cm x 155cm

Jets: 27 Hydrotherapy Jets, 3 River Jets

Seats: 5 Seats

Pumps: 3 x 3HP Massage Pump

Power: 50amps

Weight: 1,361kgs

Litres: 8,018L



VM Series Features

Vita Tunes with Subwoofer
Hydrotherapy Jets
High Flow River Jets

Six Backlit Fountains
Multi-Cartridge Filtration
Multiple Illumination Zones
Touch Screen Control

Global App Control
Swim Tether Mount
Status System



Optional Extras

Ozone Purification
CleanZone Ultra (Ozone and UVC)

Swim Tether
Rowing Kit

Swim Spas



VB4

14ft

When you're not getting in a superior exercise experience in the VB4, you can sit back and relax on your own or invite your friends and family to join you on the extra bench seating.

The VB4, is a 14ft spacious Swim Spa/Hot Tub Hybrid. Powered by 2 x 3HP Massage Pump, the VB4 also has 19 Hydrotherapy Jets, 2 River Jets. With its 3 spa seats and 6 additional side bench seats this swim spa has an amazing 9 seat capacity.

- Large Dual Cartridge Filtration
- Northern Exposure Insulation System
- Latest Technology M7 Heating
- Integrated Bluetooth Music System with Subwoofer
- LED Cup Holders & 20 bright underwater LED lights
- Easy to read Deluxe touchscreen topside controls.



Technical Information

Size: 427cm x 228cm x 127cm

Jets: 19 Hydrotherapy Jets, 2 River Jets

Seats: 9 Seats

Pumps: 2 x 3HP Massage Pump

Power: 40amps

Weight: 1,048kgs

Litres: 5,867L



V Series Features

Vita Tunes with Subwoofer
Hydrotherapy Jets
High Flow River Jets

Six Backlit Fountains
Multi-Cartridge Filtration
Multiple Illumination Zones
Touch Screen Control

Global App Control
Swim Tether Mount
Status System



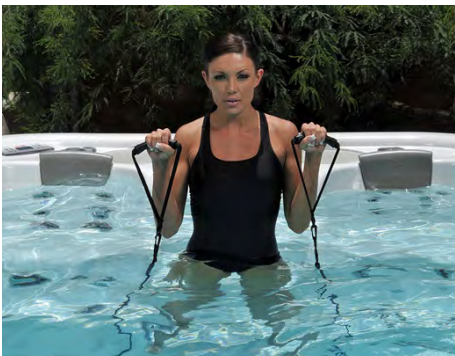
VL4

14ft

The VL4 will give you the ultimate swimming experience with its xStreamForce jet propulsion system designed to provide a steady, strong flow that will leave you feeling accomplished after a solid workout.

The VL4, is a 14ft spacious Swim Spa/Hot Tub Hybrid. Powered by 2 x 3HP Massage Pump, the VL4 also has 19 Hydrotherapy Jets, 2 River Jets and 3 spa seats.

- Large Dual Cartridge Filtration
- Northern Exposure Insulation System
- Latest Technology M7 Heating
- Integrated Bluetooth Music System with Subwoofer
- LED Cup Holders & 20 bright underwater LED lights
- Easy to read Deluxe touchscreen topside controls.



Technical Information

Size: 427cm x 228cm x 127cm
Jets: 19 Hydrotherapy Jets, 2 River Jets
Seats: 3 Seats
Pumps: 2 x 3HP Massage Pump
Power: 40amps
Weight: 1,048kgs
Litres: 5,867L



Optional Extras

Ozone Purification
 CleanZone Ultra (Ozone and UVC)

Swim Tether
 Rowing Kit

Swim Spas



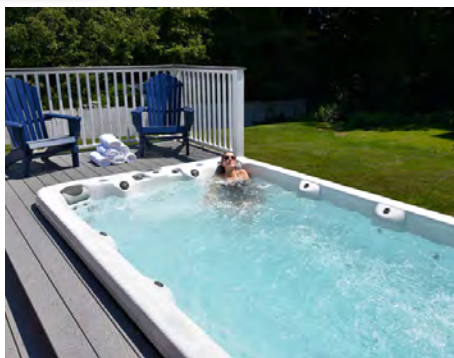
XB4

14ft

You'll have plenty of room to exercise and plenty of room to entertain in the XB4 with bench seating. Get your workout in and then gather your friends for a fun, relaxing night in your swim spa.

The XB4, is a 14ft spacious Swim Spa/Hot Tub Hybrid. Powered by 2 x 3HP Massage Pumps. The XB4 also has 19 Hydrotherapy Jets and 4 Turbo Swim Jets. With its 3 spa seats and 6 additional side bench seats this swim spa has an amazing 9 seat capacity.

- Large Dual Cartridge Filtration
- Northern Exposure Insulation System
- Latest Technology M7 Heating
- Integrated Bluetooth Music System with Subwoofer
- LED Cup Holders & 20 bright underwater LED lights
- Easy to read Deluxe touchscreen topside controls.



Technical Information

Size: 427cm x 228cm x 127cm

Jets: 19 Hydrotherapy Jets,
4 Turbo Swim Jets

Seats: 9 Seats

Pumps: 2 x 3HP Massage Pump

Power: 32amps

Weight: 998kgs

Litres: 5,867L



X Series Features

Vita Tunes with Subwoofer
Hydrotherapy Jets
Turbo Swim Jets

Six Backlit Fountains
Multi-Cartridge Filtration
Multiple Illumination Zones
Touch Screen Control

Global App Control
Swim Tether Mount



XL4

14ft

The XL4 provides plenty of room for you to move your body as you take part in superior low impact exercise that will have your body feeling strong. Then, when your workout is complete, sit back and recover with a relaxing massage.

The XL4, is a 14ft spacious Swim Spa/Hot Tub Hybrid. Powered by 2 x 3HP Massage Pumps. The XL4 also has 19 Hydrotherapy Jets and 4 Turbo Swim Jets.

- Large Dual Cartridge Filtration
- Northern Exposure Insulation System
- Latest Technology M7 Heating
- Integrated Bluetooth Music System with Subwoofer
- LED Cup Holders & 20 bright underwater LED lights
- Easy to read Deluxe touchscreen topside controls.



Technical Information

Size: 427cm x 228cm x 127cm

Jets: 19 Hydrotherapy Jets, 4 Turbo Swim Jets

Seats: 3 Seats

Pumps: 2 x 3HP Massage Pump

Power: 32amps

Weight: 998kgs

Litres: 5,867L



Optional Extras

Ozone Purification
CleanZone Ultra (Ozone and UVC)

Swim Tether
Rowing Kit

Swim Spas



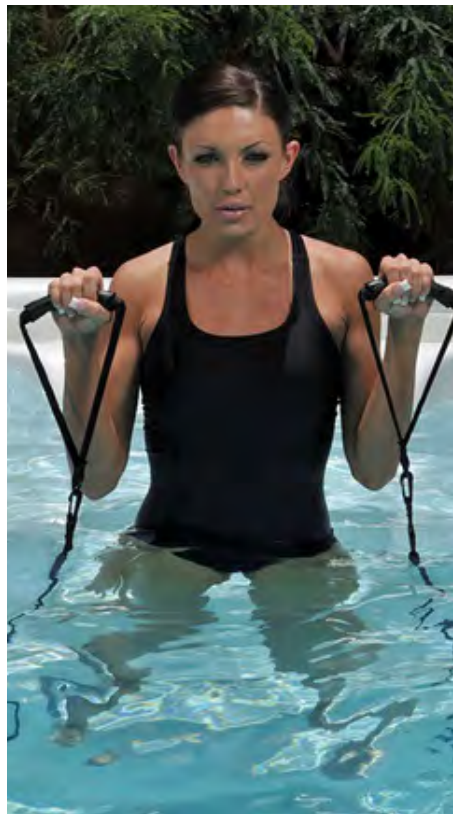
XF2

12ft

The XF2 is the smallest swim spa in the Vita STR line, designed for smaller spaces. There is still plenty of room to take part in superior low impact exercise that will have your body feeling strong. Then, when your workout is complete, sit back and recover with a relaxing massage.

The XStream XF2, is a 12ft compact Swim Spa/Hot Tub Hybrid. Powered by 2 x 3HP Massage Pump, the XF2 also has 25 Hydrotherapy Jets, 4 Turbo Swim Jets and 5 spa seats.

- Large Dual Cartridge Filtration
- Northern Exposure Insulation System
- Latest Technology M7 Heating
- Integrated Bluetooth Music System with Subwoofer
- LED Cup Holders & 20 bright underwater LED lights
- Easy to read Deluxe touchscreen topside controls.



Technical Information

Size: 371cm x 228cm x 127cm

Jets: 25 Hydrotherapy Jets,
4 Turbo Swim Jets

Seats: 5 Seats

Pumps: 2 x 3HP Massage Pump

Power: 32amps

Weight: 998kgs

Litres: 4,266L



XF Series Features

Vita Tunes with Subwoofer
Hydrotherapy Jets
Turbo Swim Jets

Six Backlit Fountains
Multi-Cartridge Filtration
Multiple Illumination Zones
Touch Screen Control

Global App Control
Swim Tether Mount



Optional Extras

Ozone Purification
CleanZone Ultra (Ozone and UVC)

Swim Tether
Rowing Kit



Longevity and trust are very important in customers' thoughts when considering a hot tub purchase, and rest assured we offer both.

Vita Spa STR are proudly made in the U.S.A. by MAAX Corp, a company who have been manufacturing spas since 1977 and are one of the largest manufacturers in the world today. Vita Spa STR have been imported into the UK since 2003 and is now sold through a nationwide dealership network.

Having a dealership network provides local manufacturer trained engineers for delivery, servicing and after sales, which means we achieve a higher standard of customer care, something you can't guarantee from an internet purchase.

The benefit of local expertise is paramount in reassuring customers they will receive a fantastic service from start to finish. We build relationships with them to ensure a great experience enjoying their hot tub for years to come, again something you can't guarantee from an internet purchase.

To find your local authorised dealer visit www.vitaspa.co.uk